



GMT MONTHLY MEMBERSHIP PROGRESS REPORT

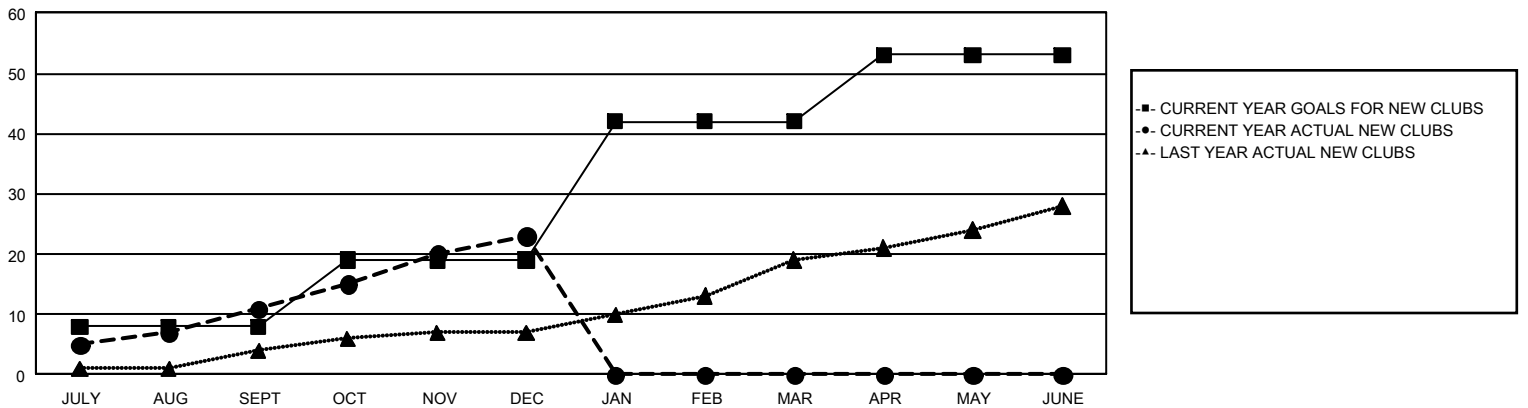
GAT Constitutional Area 5 - Japan

Results as of: 12/31/2025

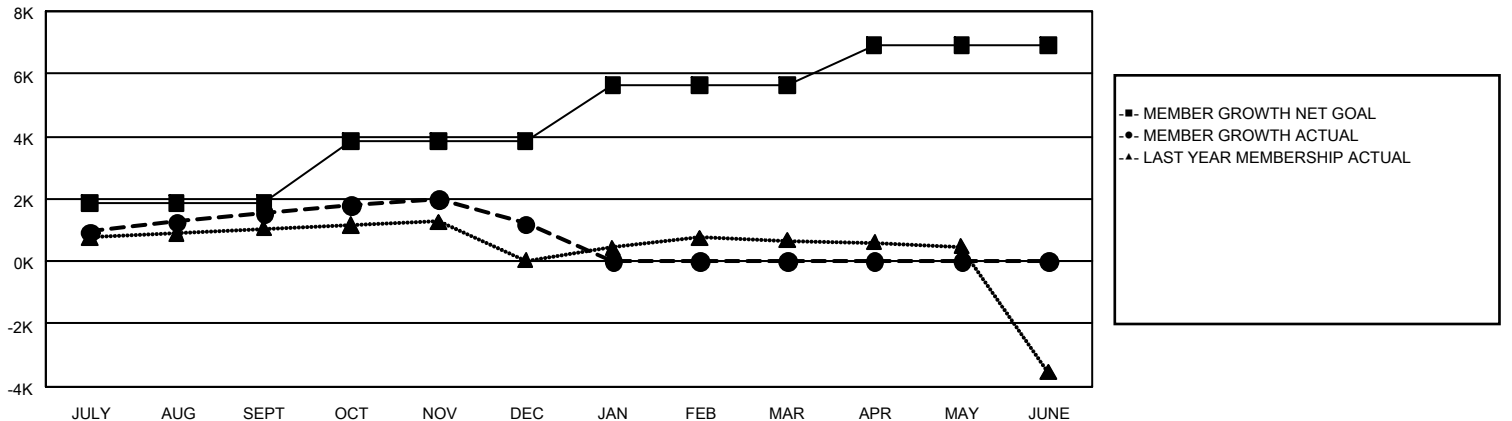
REPORT DOES NOT INCLUDE CLUBS IN UNDISTRICTED AREAS.

Clubs				Members			
RESULTS FOR 2025-2026				RESULTS FOR 2025-2026			
QUARTER	NEW CLUB GOAL	NEW CLUBS	DROPPED CLUBS	QUARTER	MEMBER GROWTH NET GOAL	MEMBER GROWTH ACTUAL	DROPPED MEMBERS ACTUAL (including transfers)
JULY/AUG/SEPT	8	11	4	JULY/AUG/SEPT	1,850	3,299	1,493
OCT/NOV/DEC	11	12	8	OCT/NOV/DEC	1,994	1,596	1,892
JAN/FEB/MAR	23	0	0	JAN/FEB/MAR	1,787	0	0
APR/MAY/JUNE	11	0	0	APR/MAY/JUNE	1,271	0	0

GOALS AND ACTUAL NEW CLUBS CUMULATIVE



GOALS AND ACTUAL MEMBERS CUMULATIVE



DROPPED CLUBS: 12

1,502 CLUBS OF 2,674 ADDED 1 OR MORE NEW MEMBERS

GENDER DISTRIBUTION

MALE 70,449 (77.24%)
FEMALE 20,740 (22.74%)

DROPPED MEMBERS

DECEASED	326
CLUB CANCELLED	71
OTHER	2,979
TOTAL	3,376

[CLICK HERE FOR CUMULATIVE MEMBERSHIP DATA](#)

TOTAL FAMILY UNIT MEMBERS	24,485
FAMILY MEMBERS PAYING HALF DUES	13,593